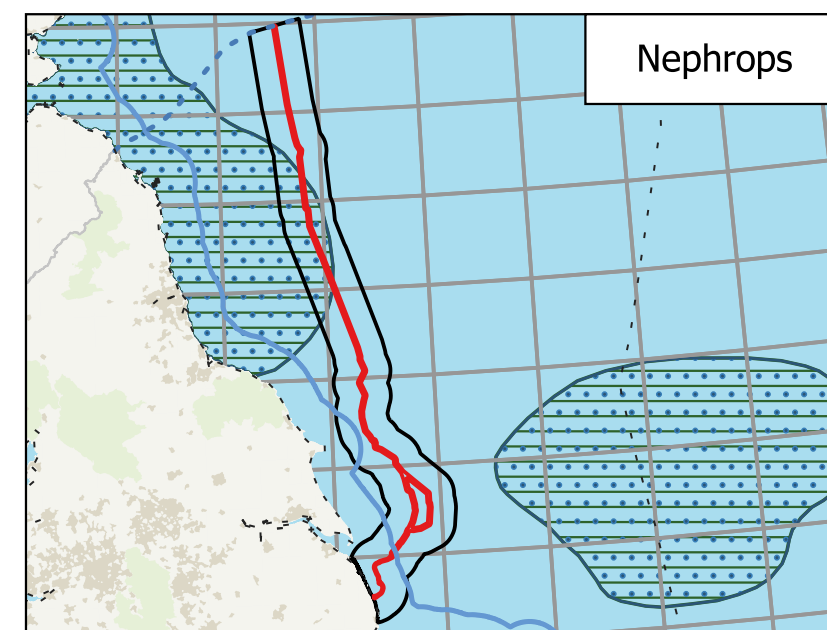
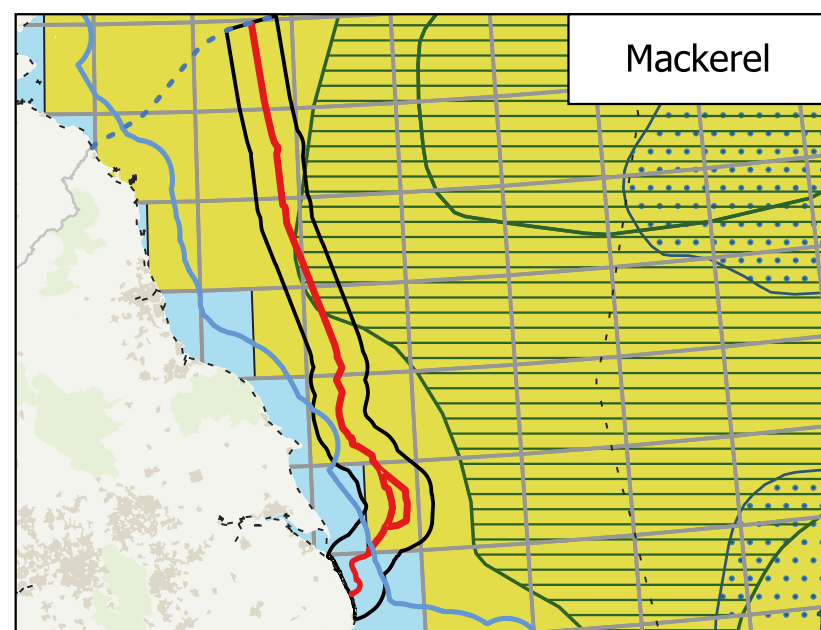
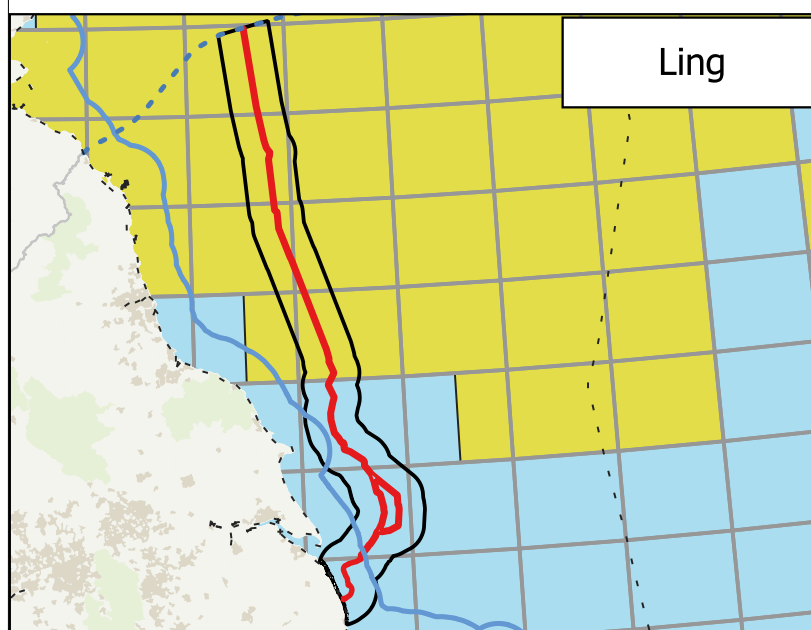
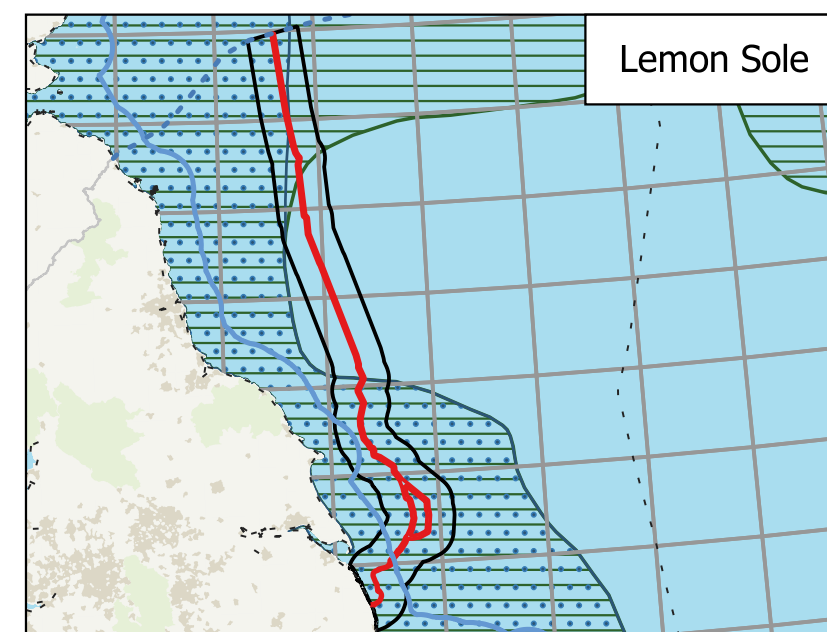
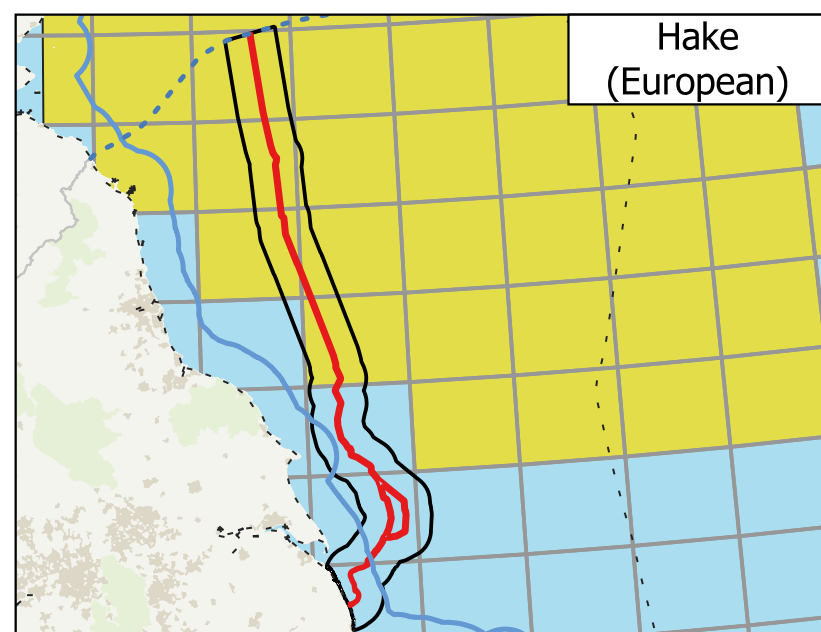
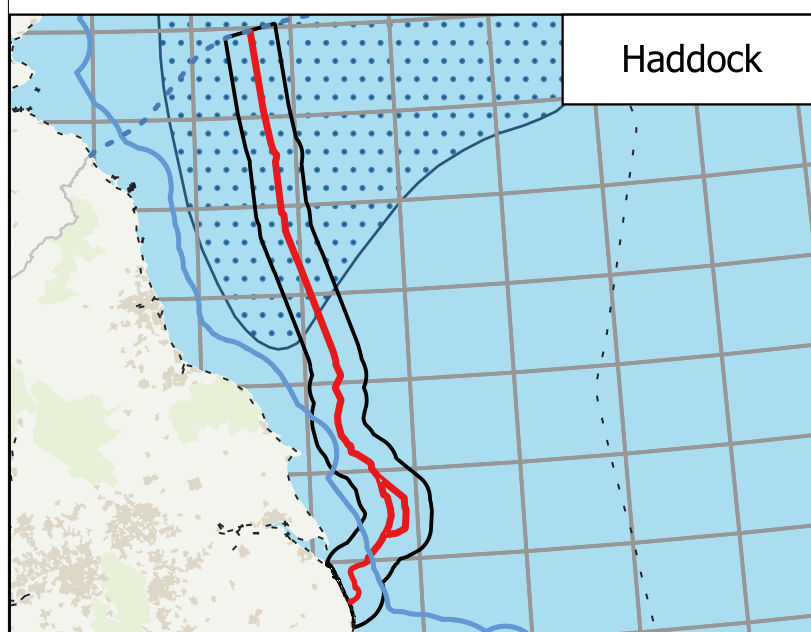
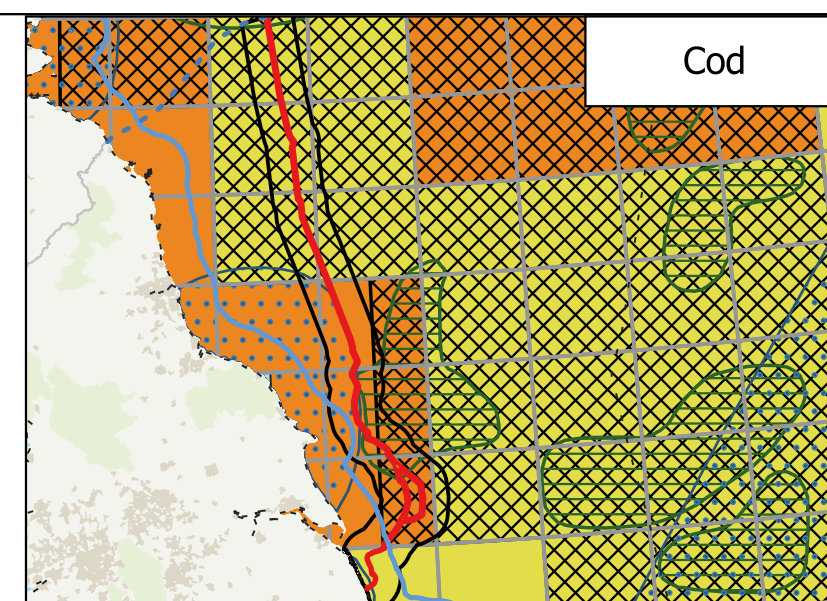
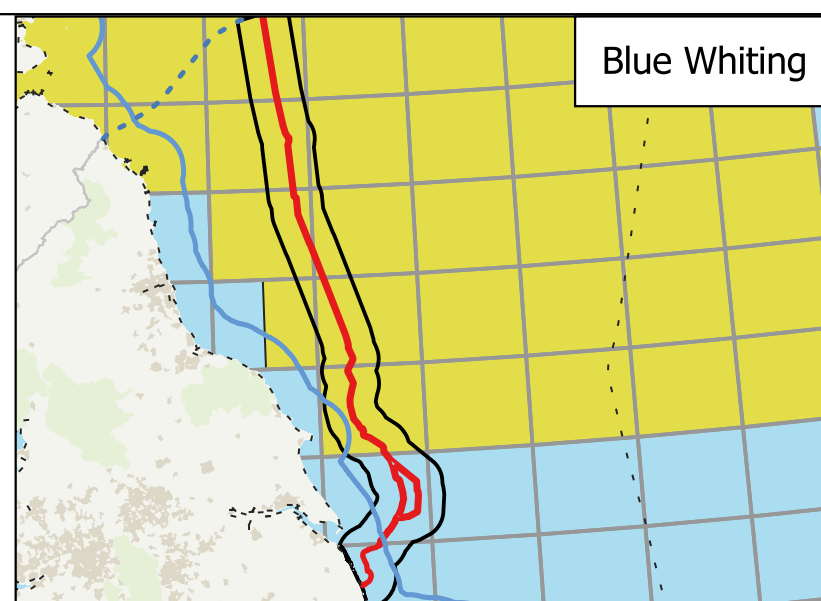
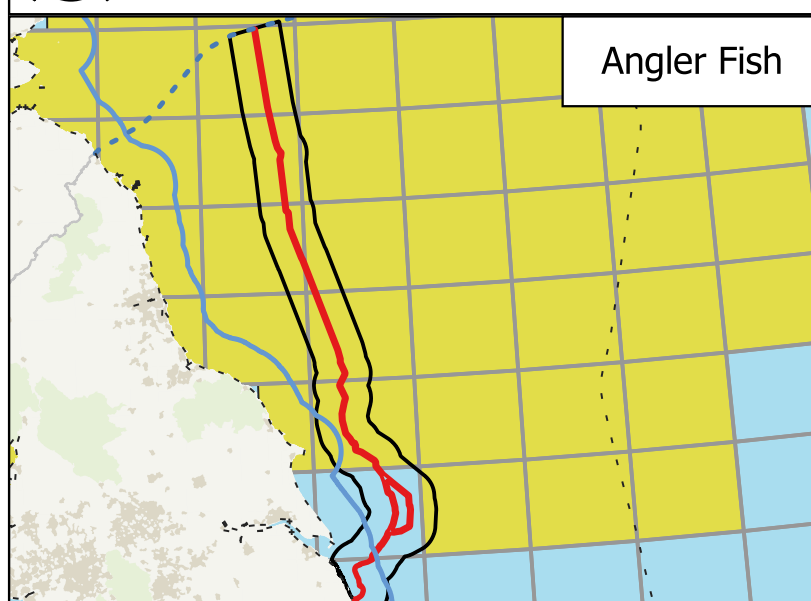




Figure 20-1
Chapter 20: Fish and Shellfish Ecology
Fish Nursery and Spawning Grounds with Intensity of Activity within the Study Area - Map 1



Legend

- Scottish Marine Border
- 12 NM Limit
- - EEZ
- ICES Rectangles
- Fish and Shellfish Ecology
- Study Area (15 km either side of English Offshore Scheme Scoping Boundary)
- English Offshore Scheme Scoping Boundary

Spawning and Nursery Grounds
(Coull et al., 1998)

-  Nursery
 Spawning

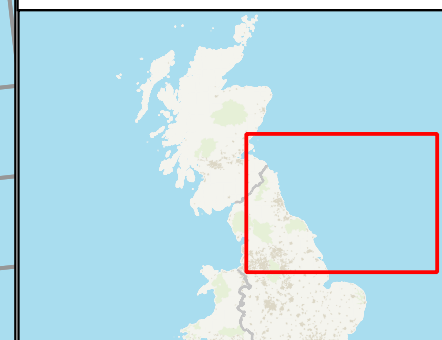
Spawning Grounds with Intensity
(Ellis et al., 2012)

- High
 - Low

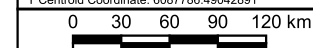
Nursery Grounds with Intensity
(Ellis et al., 2012)

-

Notes This drawing is scaled at paper size A3, therefore any prints taken at smaller sizes will affect accuracy of the measurement units and should not be scaled against.



Coordinate System: ETRS89 / UTM zone 30N
X Centroid Coordinate: 759651.0203059923
Y Centroid Coordinate: 6087786.49042891



UKHO/Cefas - Spawning and Nursery Grounds Layers for Selected Fish in UK Waters
1998/2010/2012 by Coul et al. and Ellis et al. Contains public sector information licensed under
the Open Government Licence v3.0. ICES Statistical Rectangles 2025 - All public data are
under the Creative Commons (CC by 4.0) licence. Basemap: OS OpenZoomStack contains OS
data © Crown copyright and database right 2025.

3	14/08/2025	DRAFT	JDB	MDC	MDC
Issue	Date	Remarks	Drawn	Checked	Approved

Title

Figure 20-1
Chapter 20: Fish and Shellfish Ecology
Fish Nursery and Spawning Grounds with Intensity of
Activity within the Study Area - Map 1
EGL 5 EIA Scoping Report
Volume 3: Figures

nationalgrid

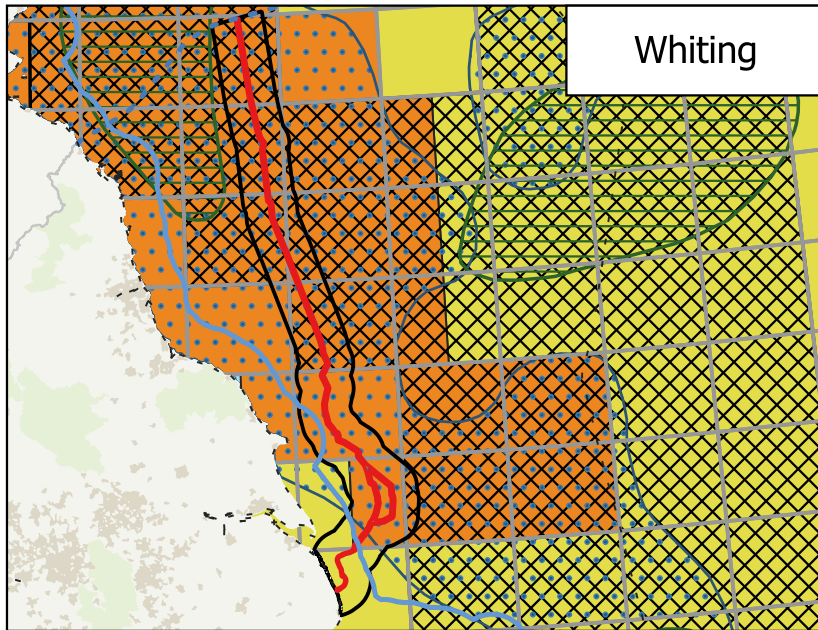
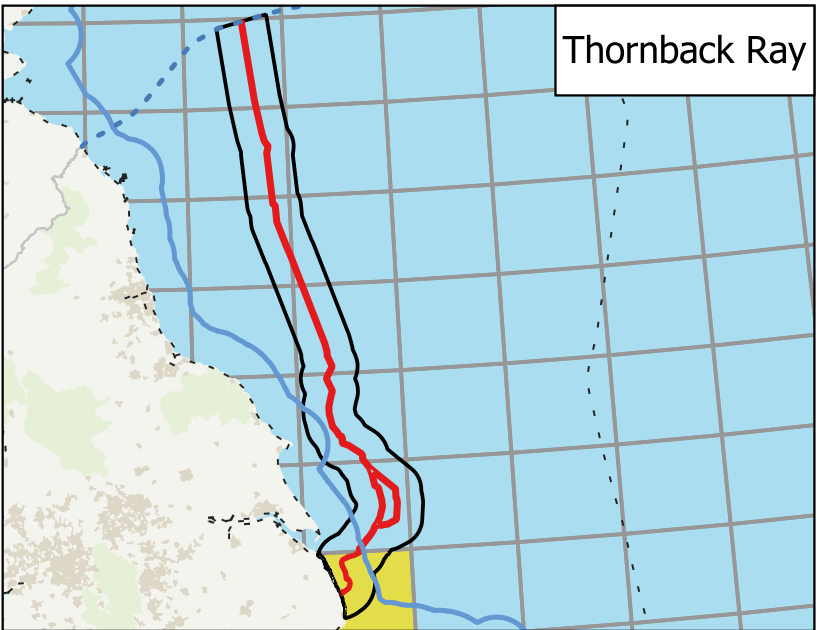
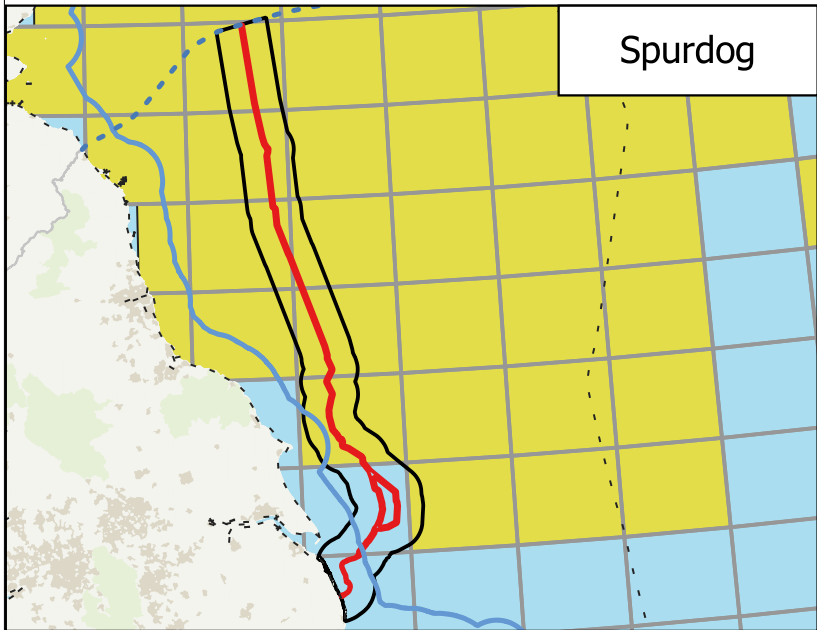
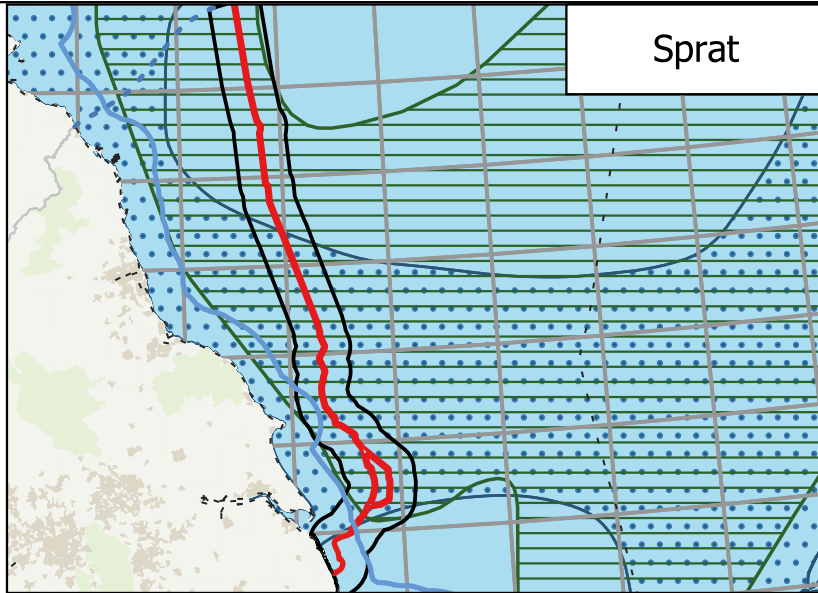
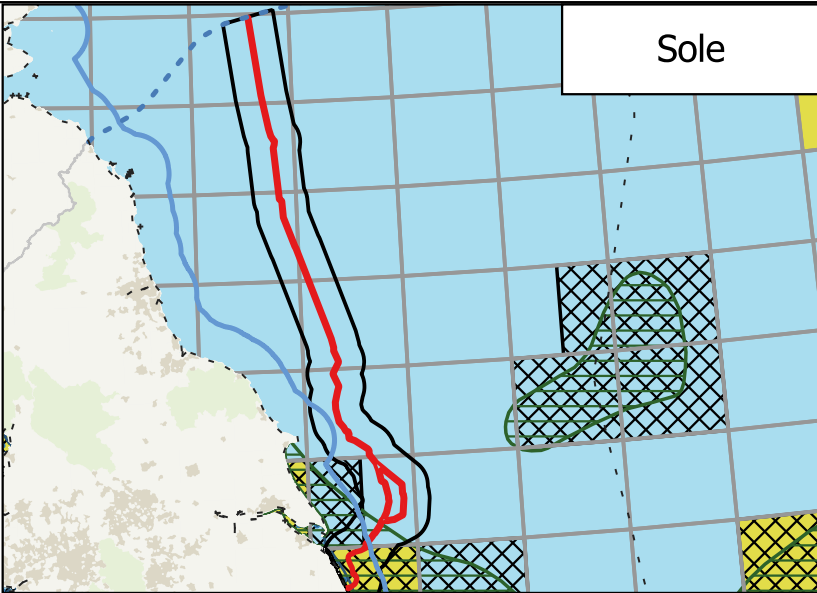
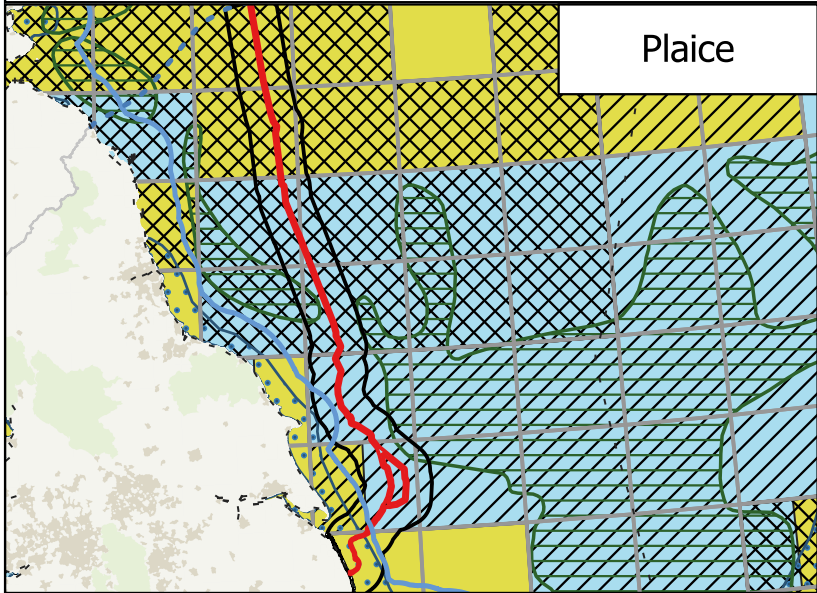
Figure Number

<u>Drawing Reference</u>	J0912-25-06-24 EGL5 001 C
--------------------------	---------------------------

<u>Scale</u>	<u>Sheet Size</u>	<u>Sheet</u>	<u>Issue</u>
1:4,700,000	A3	SHEET 1 OF 1	3



Figure 20-2
Chapter 20: Fish and Shellfish Ecology
Fish Nursery and Spawning Grounds with Intensity of Activity within the Study Area - Map 2



Legend

- Scottish Marine Border
- 12 NM Limit
- EEZ
- ICES Rectangles
- English Offshore Scheme Scoping Boundary
- Fish and Shellfish Ecology Study Area (15 km either side of English Offshore Scheme Scoping Boundary)
- Spawning and Nursery Grounds (Coul et al., 1998)
 - Nursery
 - Spawning
- Spawning Grounds with Intensity (Ellis et al., 2012)
 - High
 - Low
- Nursery Grounds with Intensity (Ellis et al., 2012)
 - High
 - Low

Notes This drawing is scaled at paper size A3, therefore any prints taken at smaller sizes will affect accuracy of the measurement units and should not be scaled against.



Coordinate System: ETRS89 / UTM zone 30N
X Centroid Coordinate: 759825.1311149353
Y Centroid Coordinate: 6078682.298854621



UKHO/Cefas - Spawning and Nursery Grounds Layers for Selected Fish in UK Waters 1998/2010/2012 by Coul et al. and Ellis et al. Contains public sector information licensed under the Open Government Licence v3.0. ICES Statistical Rectangles 2025 - All public data are under the Creative Commons (CC by 4.0) licence. Basemap: OS OpenZoomStack contains OS data © Crown copyright and database right 2025.

3	14/08/2025	DRAFT	JDB	MDC	MDC
Issue	Date	Remarks	Drawn	Checked	Approved

Title

Figure 20-2
Chapter 20: Fish and Shellfish Ecology
Fish Nursery and Spawning Grounds with Intensity of Activity within the Study Area - Map 2
EGL 5 EIA Scoping Report
Volume 3: Figures

nationalgrid			
<u>Figure Number</u>		Figure 20-2	
<u>Drawing Reference</u>			
J0912-25-06-24_EGL5_002_C			
<u>Scale</u>	<u>Sheet Size</u>	<u>Sheet</u>	<u>Issue</u>
1:4,700,000	A3	SHEET 1 OF 1	3

